



GAT MONTHLY MEMBERSHIP PROGRESS REPORT

Results as of: 5/31/2023

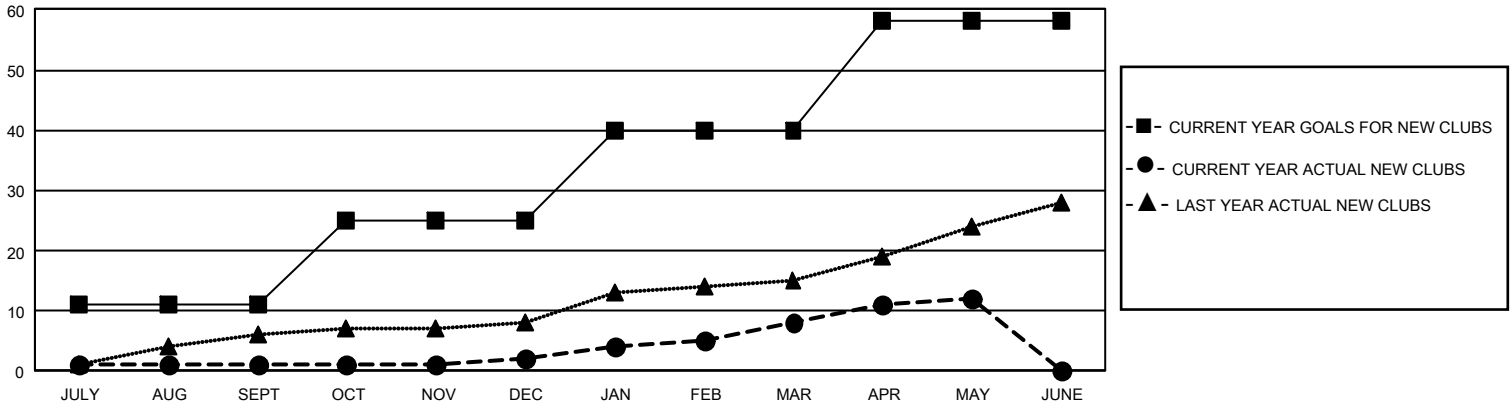
GMT Constitutional Area 4, Group F

REPORT DOES NOT INCLUDE CLUBS IN UNDISTRICTED AREAS.

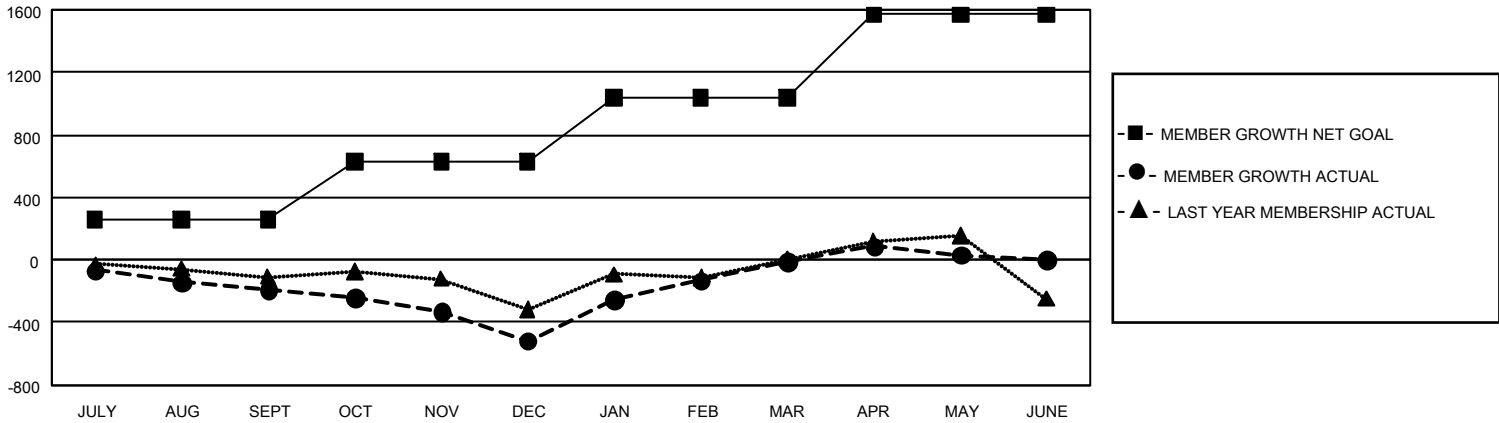
| Clubs | | | |
|-----------------------|---------------|-----------|---------------|
| RESULTS FOR 2022-2023 | | | |
| QUARTER | NEW CLUB GOAL | NEW CLUBS | DROPPED CLUBS |
| JULY/AUG/SEPT | 33 | 1 | 6 |
| OCT/NOV/DEC | 42 | 1 | 4 |
| JAN/FEB/MAR | 45 | 6 | 1 |
| APR/MAY/JUNE | 54 | 4 | 1 |

| Members | | | |
|-----------------------|------------------------|----------------------|--|
| RESULTS FOR 2022-2023 | | | |
| QUARTER | MEMBER GROWTH NET GOAL | MEMBER GROWTH ACTUAL | DROPPED MEMBERS ACTUAL (including transfers) |
| JULY/AUG/SEPT | 257 | 623 | 721 |
| OCT/NOV/DEC | 374 | 1,005 | 1,215 |
| JAN/FEB/MAR | 409 | 1,233 | 647 |
| APR/MAY/JUNE | 531 | 695 | 584 |

GOALS AND ACTUAL NEW CLUBS CUMULATIVE



GOALS AND ACTUAL MEMBERS CUMULATIVE



| | | | |
|------------------------|--|---------------------------------|-----------------|
| DROPPED CLUBS: 12 | 972 CLUBS OF 1,573 ADDED 1 OR MORE NEW MEMBERS | <u>GENDER DISTRIBUTION</u> | |
| | | MALE | 29,632 (68.20%) |
| <u>DROPPED MEMBERS</u> | | FEMALE | 13,809 (31.78%) |
| DECEASED | 425 | NON BINARY | 0 (0.00%) |
| CLUB CANCELLED | 84 | PREFER NOT TO ANSWER | 6 (0.01%) |
| OTHER | 2,660 | TOTAL FAMILY UNIT MEMBERS | 3,615 |
| TOTAL | 3,169 | FAMILY MEMBERS PAYING HALF DUES | 1,874 |

[CLICK HERE FOR CUMULATIVE MEMBERSHIP DATA](#)